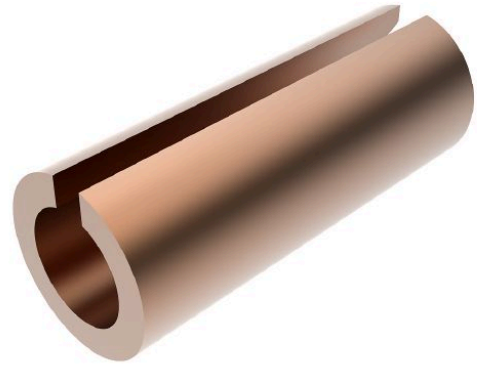


Reducing Sleeve Cu 16/10 mm², Length 15 mm

for copper and aluminium/copper compression joints.

Material, Surface:

Cu uncoated



Picture may vary.

Technical Data

Article no.	302 436 436
Type	Reducing sleeves
Conductor cross section	(mm²) 16/10
Material	Cu
Surface	uncoated

Dimensions

Diameter D1	Ø d1 (mm)	5,5
Diameter D2	Ø d2 (mm)	4,5
Dimension L	(mm)	15