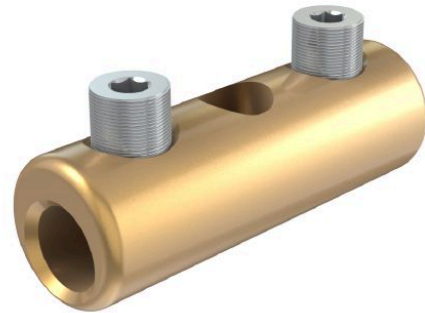


Low Voltage Screw Connector, with inspection hole

The low voltage connectors meet the bolt protrusion requirements of the DIN SPEC 47640 standard. No rework is necessary for heat shrinking over the connectors.

This article contains 4 pieces in a polybag.



Picture may vary.

Technical Data

Article no.		332 801 120 0001
Conductor cross section Cu RE	(mm ²)	1,5 - 16
Conductor cross section Cu RM	(mm ²)	1,5 - 16
Conductor cross section Cu SM	(mm ²)	1,5 - 16
Number of screws		2
Surface		uncoated
Width across flats		2.5 (inner hexagon)
Screw Type		stud screw
Inspection hole		yes
Blind hole		no
Packing unit		4

Dimensions

Outer diameter	Ø (mm)	10
Body Length	(mm)	30