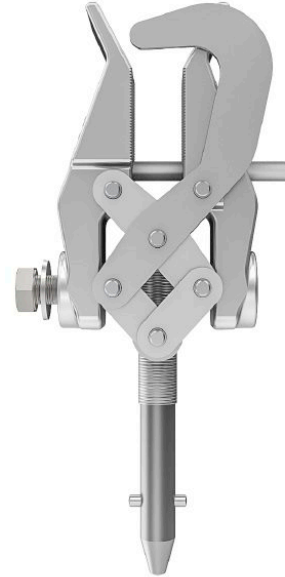


Parallel Line Clamp P11D

PFISTERER offers a comprehensive range of phase connection clamps for earthing and short-circuiting devices. Depending on the version, these phase connection clamps are designed for connection to overhead lines or in switchgear.

Technical description:

- Stainless steel A2 screw spindle
- Reliable contact between terminal and conductor
- Compact and robust design
- Easy handling
- Matching earthing rods available in all versions
- Connection to earthing and short-circuiting device with screw M12



Picture may vary.

Technical Data

Article no.		360 335 004
Area of application		Overhead Line
Max. cross section of connected cable	(mm ²)	95
Max. short-circuit current	I _k 1 s (A)	18700
for circular conductors	Ø (mm)	10 - 32
for flat conductors	(mm)	10 - 32
Clamping range	(mm)	10 - 32
Clamping width	(mm)	38
Weight	(g)	1010