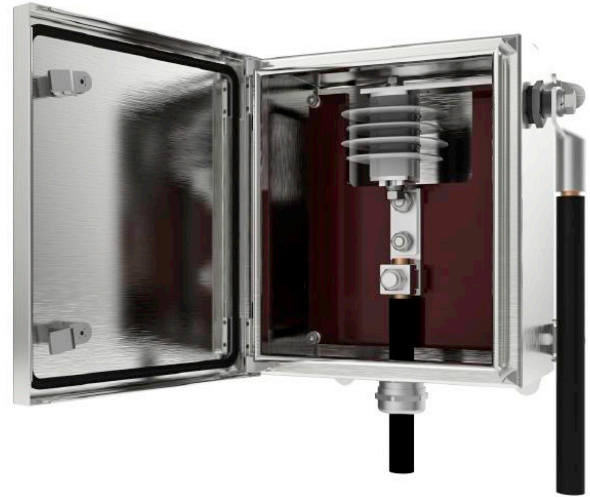


Link Box LB.W.X.7.1.S1.E0.050

PFISTERER's link boxes are key to reliable cross bonding and earthing concepts. The robust design withstands harsh operating conditions and contributes to high availability of plants. A wide product range and portfolio ensures maximum flexibility in planning of cable systems.



Picture may vary.

Technical Data

Article no.	239 003 099	
Application	For wall type	
Material	Stainless Steel ANSI 304	
Link Box Type	Surge arrester	
Type of bonding lead	Single core cable	
Number of bonding cable entries	One cable connected to the cable screen	
Number of earthing cable entries	Earth connected outside the box	
Rated voltage of surge arrester	U _r (kV)	5
Number of phases	single-phase	
Conductor cross section	(mm ²)	185 - 400
Bonding cable conductor diameter	(mm)	14 - 25
Bonding cable overall diameter	(mm)	20 - 35
Protection Type	IP 66	