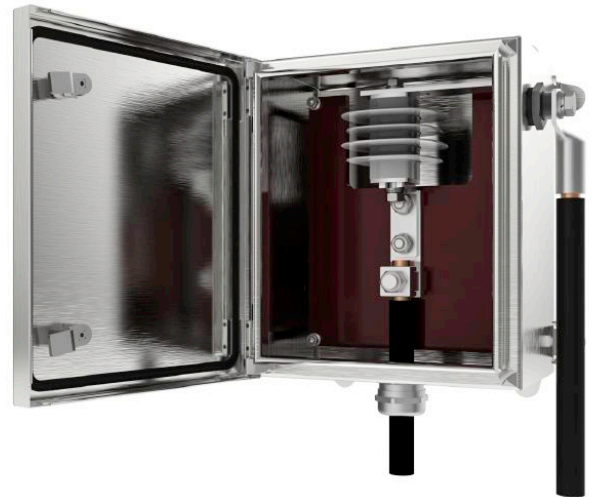


# Link Box LB.W.X.7.1.S1.E0.060

PFISTERER's link boxes are key to reliable cross bonding and earthing concepts. The robust design withstands harsh operating conditions and contributes to high availability of plants. A wide product range and portfolio ensures maximum flexibility in planning of cable systems.



*Picture may vary.*

## Technical Data

<b>Article no.</b>	<b>239 003 159</b>	
<b>Application</b>	For wall type	
<b>Material</b>	Stainless Steel ANSI 304	
<b>Link Box Type</b>	Surge arrester	
<b>Type of bonding lead</b>	Single core cable	
<b>Number of bonding cable entries</b>	One cable connected to the cable Screen	
<b>Number of earthing cable entries</b>	Earth connected outside the box	
<b>Rated voltage of surge arrester</b>	<b>U<sub>r</sub> (kV)</b>	6
<b>Number of phases</b>	single-phase	
<b>Conductor cross section</b>	<b>(mm<sup>2</sup>)</b>	70 - 150
<b>Bonding cable conductor diameter</b>	<b>(mm)</b>	9 - 14
<b>Bonding cable overall diameter</b>	<b>(mm)</b>	13 - 28
<b>Protection Type</b>	IP 66	