

# Link Box

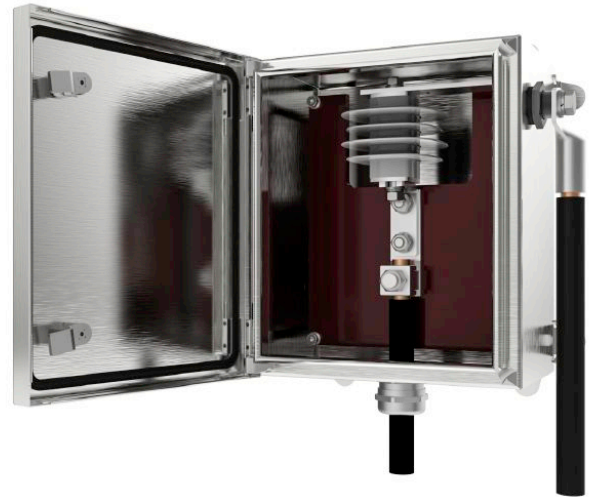
## LB.W.Y.7.1.S1.E0.030a.M40.000.g.s005

PFISTERER's link boxes are key to reliable cross bonding and earthing concepts. The robust design withstands harsh operating conditions and contributes to high availability of plants. A wide product range and portfolio ensures maximum flexibility in planning of cable systems.

### Attention:

Due to the metal housing material of stainless steel AISI 316L, this link box is in particular suitable for use in highly corrosive environments or near by the sea.

This link box has a locking system with device for the use of a padlock (**s005**). The padlock is not included in the scope of delivery.



Picture may vary.

## Technical Data

<b>Article no.</b>		<b>239 004 117</b>
<b>Application</b>		<b>For wall type</b>
<b>Material</b>		<b>Stainless Steel AISI 316L</b>
<b>Link Box Type</b>		<b>Surge arrester</b>
<b>Type of bonding lead</b>		<b>Single core cable</b>
<b>Number of bonding cable entries</b>		<b>One cable connected to the cable screen</b>
<b>Number of earthing cable entries</b>		<b>Earth connected outside the box</b>
<b>Voltage of surge arrester</b>	$U_r / U_c$ (kV)	<b>3.0 / 2.4</b>
<b>Number of phases</b>		<b>single-phase</b>
<b>Conductor cross section</b>	(mm <sup>2</sup> )	<b>150 - 400</b>
<b>Bonding cable conductor diameter</b>	(mm)	<b>14 - 25</b>
<b>Bonding cable overall diameter</b>	(mm)	<b>13 - 28</b>
<b>Protection class</b>		<b>IP66</b>