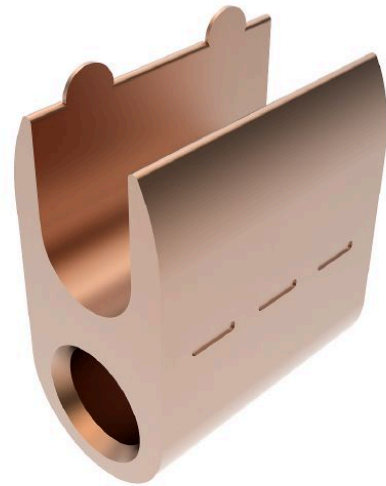


# Compression Tap Connector U-Shaped, Cu 50/25 mm<sup>2</sup>

for copper cables in accordance with DIN 48201, Part 1.  
For cable branchings on overhead lines.

**Material:**

Cu uncoated



*Picture may vary.*

## Technical Data

Type	U-Shaped	
Article no.	302 374 371	
Cross section of main conductor	(mm <sup>2</sup> )	50
Cross section of tap conductor	(mm <sup>2</sup> )	25
Diameter main conductor	(mm)	9
Diameter tap-conductor	(mm)	6,3
Code number	19 R	
Number of compressions x compression width	(mm)	3 x 5
Surface	uncoated	

## Dimensions

Dimension B	b (mm)	15
Dimension H	h (mm)	25,5
Dimension L	(mm)	28