

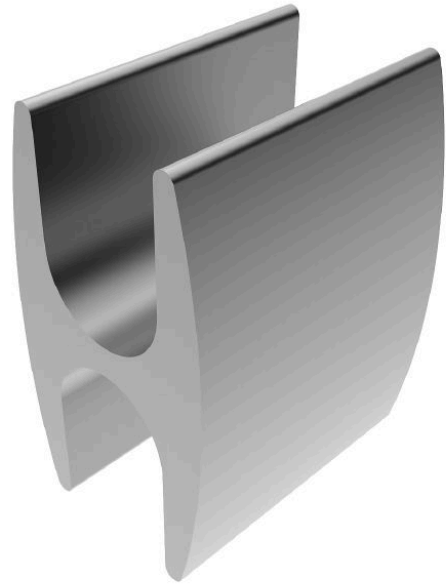
Compression Tap Connector H-Shaped - Cu 150/150 mm², tin-plated

for DIN 48201 compliant copper cables.
For cable taps and earth grid ring mains.

Sector-shaped conductors must be rounded with round-forming dies.

Material:

■ Cu



Picture may vary.

Technical Data

Type	H-Shaped	
Article no.	302 435 357	
Cross section of main conductor	(mm ²)	150
Cross section of tap conductor	(mm ²)	150
Diameter main conductor	(mm)	15,8
Diameter tap-conductor	(mm)	15,8
Code number	34 R	
Number of compressions x compression width	(mm)	- / 1 x 23
Surface	tin-plated	

Dimensions

Dimension B	b (mm)	27
Dimension L	(mm)	23