

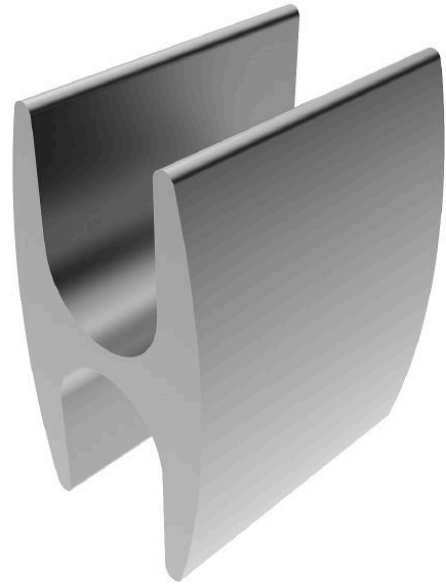
Compression Tap Connector H-Shaped - Cu 95/95 mm², tin-plated

for DIN 48201 compliant copper cables.
For cable taps and earth grid ring mains.

Sector-shaped conductors must be rounded with round-forming dies.

Material:

■ Cu



Picture may vary.

Technical Data

Type	H-Shaped	
Article no.	302 435 411	
Cross section of main conductor	(mm ²)	95
Cross section of tap conductor	(mm ²)	95
Diameter main conductor	(mm)	12,5
Diameter tap-conductor	(mm)	12,5
Code number	30 R	
Number of compressions x compression width	(mm)	- / 1 x 30
Surface	tin-plated	

Dimensions

Dimension B	b (mm)	22
Dimension L	(mm)	30