

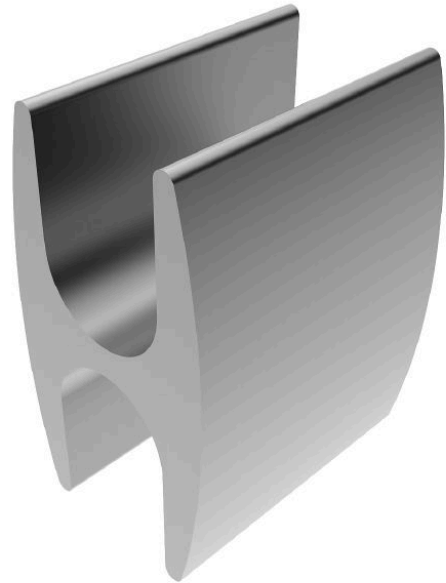
Compression Tap Connector H-Shaped - Cu 70/70 mm², tin-plated

for DIN 48201 compliant copper cables.
For cable taps and earth grid ring mains.

Sector-shaped conductors must be rounded with round-forming dies.

Material:

■ Cu



Picture may vary.

Technical Data

Type	H-Shaped	
Article no.	302 435 538	
Cross section of main conductor	(mm ²)	70
Cross section of tap conductor	(mm ²)	70
Diameter main conductor	(mm)	10,5
Diameter tap-conductor	(mm)	10,5
Code number	26 R	
Number of compressions x compression width	(mm)	3 x 5 / 1 x 28
Surface	tin-plated	

Dimensions

Dimension B	b (mm)	17
Dimension L	(mm)	28