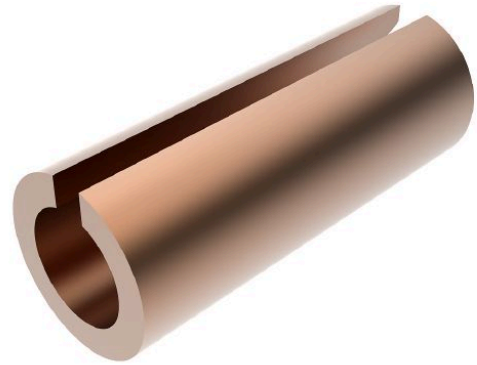


# Reducing Sleeve Cu 16/10 mm<sup>2</sup>, Length 15 mm

for copper and aluminium/copper compression joints.

**Material, Surface:**

Cu uncoated



*Picture may vary.*

## Technical Data

<b>Article no.</b>	<b>302 436 436</b>
<b>Type</b>	<b>Reducing sleeves</b>
<b>Conductor cross section</b>	<b>(mm<sup>2</sup>) 16/10</b>
<b>Material</b>	<b>Cu</b>
<b>Surface</b>	<b>uncoated</b>

## Dimensions

<b>Diameter D1</b>	<b>Ø d1 (mm)</b>	<b>5,5</b>
<b>Diameter D2</b>	<b>Ø d2 (mm)</b>	<b>4,5</b>
<b>Dimension L</b>	<b>(mm)</b>	<b>15</b>