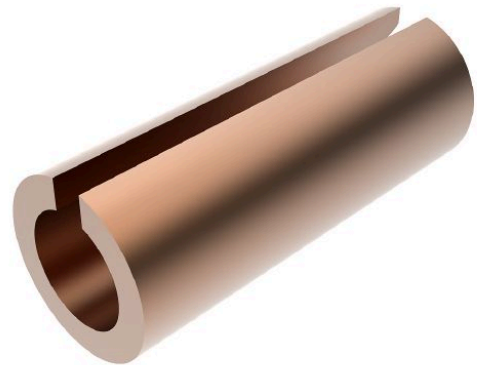


Reducing Sleeve Cu 120/95 mm², Length 40 mm

for copper and aluminium/copper compression joints.

Material, Surface:

Cu uncoated



Picture may vary.

Technical Data

Article no.	305 312 017
Type	Reducing sleeves
Conductor cross section	(mm²) 120/95
Material	Cu
Surface	uncoated

Dimensions

Diameter D1	Ø d1 (mm)	15,5
Diameter D2	Ø d2 (mm)	13,5
Dimension L	(mm)	40