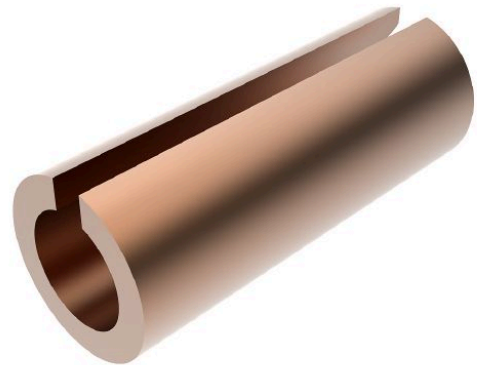


Reducing Sleeve Cu 240/185 mm², Length 55 mm

for copper and aluminium/copper compression joints.

Material, Surface:

Cu uncoated



Picture may vary.

Technical Data

Article no.	305 312 026
Type	Reducing sleeves
Conductor cross section	(mm²) 240/185
Material	Cu
Surface	uncoated

Dimensions

Diameter D1	Ø d1 (mm)	21,5
Diameter D2	Ø d2 (mm)	18,3
Dimension L	(mm)	55