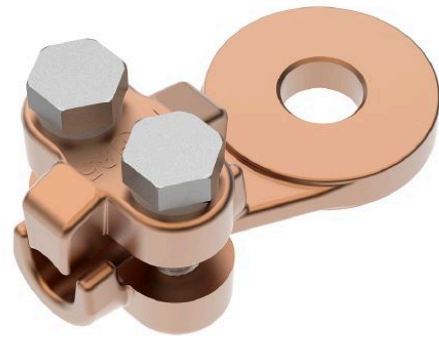


Serrated cable lug Cu with one cap



Picture may vary.

Technical Data

Article no.		330 311 311
Conductor cross section	(mm ²)	10 - 35
Diameter of terminal bolt	(mm)	10
Diameter of conductor	Ø (mm)	3,5 - 7,5
Tap plate	Ø (mm)	30
Surface		uncoated
Material		Cu

Dimensions

Mounting hole	Ø (mm)	10,5
Dimension L	(mm)	46
Dimension S	s (mm)	6