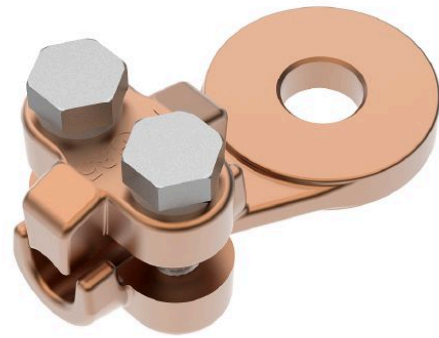


# Serrated cable lug Cu with one cap



*Picture may vary.*

## Technical Data

<b>Article no.</b>		<b>330 311 980</b>
<b>Conductor cross section</b>	(mm <sup>2</sup> )	10 - 35
<b>Diameter of terminal bolt</b>	(mm)	12
<b>Diameter of conductor</b>	Ø (mm)	3,5 - 7,5
<b>Tap plate</b>	Ø (mm)	30
<b>Surface</b>		uncoated
<b>Material</b>		Cu

## Dimensions

<b>Mounting hole</b>	Ø (mm)	13
<b>Dimension L</b>	(mm)	46
<b>Dimension S</b>	s (mm)	6