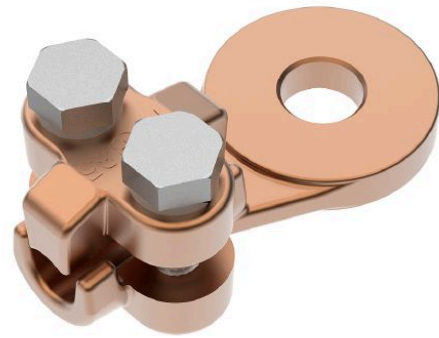


Serrated cable lug Cu with one cap



Picture may vary.

Technical Data

Article no.		330 312 971
Conductor cross section	(mm ²)	35 - 70
Diameter of terminal bolt	(mm)	12
Diameter of conductor	Ø (mm)	7,5 - 10,5
Tap plate	Ø (mm)	30
Surface		uncoated
Material		Cu

Dimensions

Mounting hole	Ø (mm)	13
Dimension L	(mm)	49
Dimension S	s (mm)	7