

# 2DIREKT Six Wire Transformer Terminal Clamp

for terminal bolts compliant with DIN EN 50386.

For **horizontal** or **vertical** connection of Cu or Al cables to the secondary side of distribution transformers with DIN EN 50386 compliant bolted connections (1 kV).

2DIREKT terminal clamps are type tested in compliance with IEC 61238 with Cu cables, 240 mm<sup>2</sup>.

**Material:**

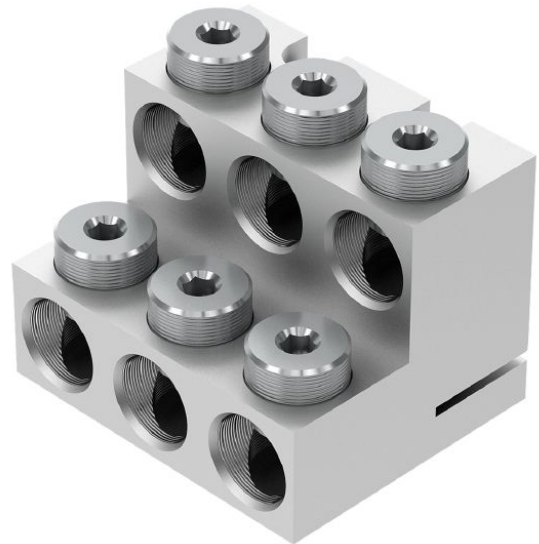
Body: high-strength Al alloy, tin-plated

Bolts: Steel, zinc based coating

Width across flats 8 for thrust bolts, 55 Nm.

Width across flats 6 for cheese-head bolts, 25 Nm.

Other types on request.



*Picture may vary.*

## Technical Data

<b>Article no.</b>		<b>331 749 011</b>
<b>Number of conductor</b>		6
<b>Connection possibility</b>		horizontal, vertical
<b>Conductor Cross Sections</b>	(mm <sup>2</sup> )	35 - 240
<b>Conductor type</b>		round stranded flexible, round stranded, sector shaped stranded
<b>Bolted connection</b>	(mm)	M42 x 3
<b>Max. apparent power at 0,4 kV</b>	(kVA)	1250
<b>Maximum current</b>	(A)	2000
<b>Earthing possibility</b>		yes
<b>min. distance between termination</b>	(mm)	108

## Dimensions

<b>Length</b>	(mm)	84
<b>Width</b>	(mm)	100
<b>Height</b>	(mm)	74