

2DIREKT Six Wire Transformer Terminal Clamp

for terminal bolts compliant with DIN EN 50386.

For **horizontal** or **vertical** connection of Cu or Al cables to the secondary side of distribution transformers with DIN EN 50386 compliant bolted connections (1 kV).

2DIREKT terminal clamps are type tested in compliance with IEC 61238 with Cu cables, 240 mm².

Material:

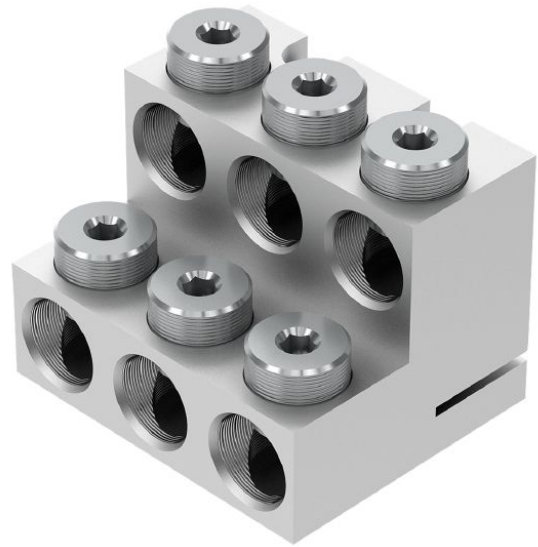
Body: high-strength Al alloy, tin-plated

Bolts: Steel, zinc based coating

Width across flats 8 for thrust bolts, 55 Nm.

Width across flats 6 for cheese-head bolts, 25 Nm.

Other types on request.



Picture may vary.

Technical Data

Article no.		331 749 012
Number of conductor		6
Connection possibility		horizontal, vertical
Conductor Cross Sections	(mm ²)	35 - 240
Conductor type		round stranded flexible, round stranded, sector shaped stranded
Bolted connection	(mm)	M48 x 3
Max. apparent power at 0,4 kV	(kVA)	2000
Maximum current	(A)	3150
Earthing possibility		yes
min. distance between termination	(mm)	108

Dimensions

Length	(mm)	84
Width	(mm)	100
Height	(mm)	74