

2DIREKT XL Two Wire Transformer Terminal Clamp

for terminal bolts compliant with DIN EN 50386.

For **horizontal** connection of Cu or Al cables to the secondary side of distribution transformers with DIN EN 50386 compliant bolted connections (1 kV). This clamp is a special version for use in transformers with very limited space.

Material:

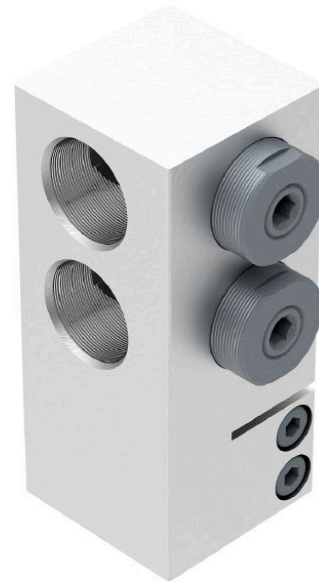
Body: high-strength Al alloy, tin-plated

Bolts: Steel, zinc based coating

Width across flats 8 for thrust bolts, 80 Nm.

Width across flats 6 for cheese-head bolts, 25 Nm.

Other types on request.



Picture may vary.

Technical Data

| | | |
|--|--------------------|---|
| Article no. | | 331 752 233 |
| Number of conductor | | 2 |
| Connection possibility | | horizontal |
| Conductor Cross Sections | (mm ²) | 185 - 400 |
| Conductor type | | round stranded flexible, round stranded, sector shaped stranded |
| Bolted connection | (mm) | M30 x 2 |
| Max. apparent power at 0,4 kV | (kVA) | 800 |
| Maximum current | (A) | 1250 |
| Earthing possibility | | no |
| min. distance between termination | (mm) | 85 |

Dimensions

| | | |
|---------------|------|-----|
| Length | (mm) | 60 |
| Width | (mm) | 60 |
| Height | (mm) | 140 |