

2DIREKT XL Six Wire Transformer Terminal Clamp

for terminal bolts compliant with DIN EN 50386.

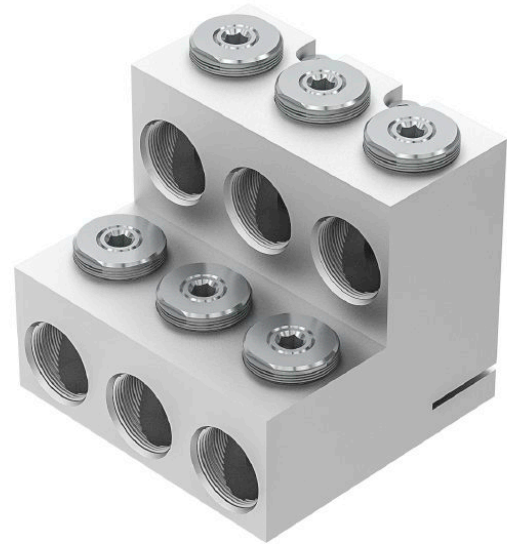
For **horizontal** and **vertical** connection of Cu or Al cables to the secondary side of distribution transformers with DIN EN 50386 compliant bolted connections (1 kV).

Material:

Body: high-strength Al alloy, tin-plated
Bolts: Steel, zinc based coating

Width across flats 8 for thrust bolts, 80 Nm.
Width across flats 6 for cheese-head bolts, 25 Nm.

Other types on request.



Picture may vary.

Technical Data

Article no.		331 753 001
Number of conductor		6
Connection possibility		horizontal, vertical
Conductor Cross Sections	(mm ²)	185 - 400
Conductor type		round stranded flexible, round stranded, sector shaped stranded
Bolted connection	(mm)	M42 x 3
Max. apparent power at 0,4 kV	(kVA)	1250
Maximum current	(A)	2000
Earthing possibility		yes
min. distance between termination	(mm)	139

Dimensions

Length	(mm)	118
Width	(mm)	127
Height	(mm)	112