

# 2DIREKT XL Six Wire Transformer Terminal Clamp

for terminal bolts compliant with DIN EN 50386.

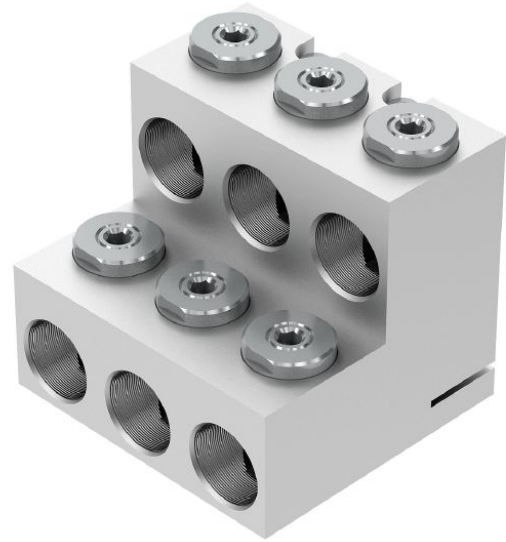
For **horizontal** and **vertical** connection of Cu or Al cables to the secondary side of distribution transformers with DIN EN 50386 compliant bolted connections (1 kV).

**Material:**

Body: high-strength Al alloy, tin-plated  
Bolts: Steel, zinc based coating

Width across flats 8 for thrust bolts, 80 Nm.  
Width across flats 6 for cheese-head bolts, 25 Nm.

Other types on request.



Picture may vary.

## Technical Data

<b>Article no.</b>		<b>331 753 002</b>
<b>Number of conductor</b>		6
<b>Connection possibility</b>		horizontal, vertical
<b>Conductor Cross Sections</b>	(mm <sup>2</sup> )	185 - 400
<b>Conductor type</b>		round stranded flexible, round stranded, sector shaped stranded
<b>Bolted connection</b>	(mm)	M48 x 3
<b>Max. apparent power at 0,4 kV</b>	(kVA)	2000
<b>Maximum current</b>	(A)	3150
<b>Earthing possibility</b>		yes
<b>min. distance between termination</b>	(mm)	139

## Dimensions

<b>Length</b>	(mm)	118
<b>Width</b>	(mm)	127
<b>Height</b>	(mm)	112