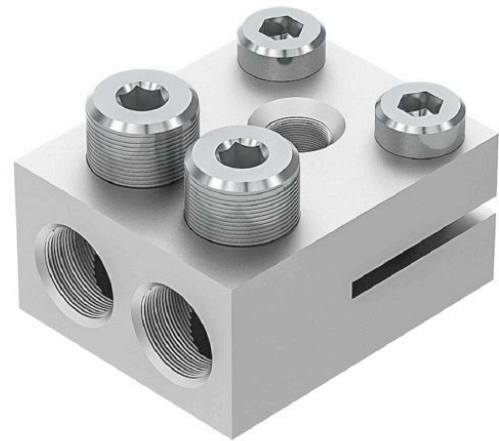


2DIREKT S Two Wire Transformer Terminal Clamp, Flat



Picture may vary.

Technical Data

Article no.		331 756 020
Number of conductor		2
Connection possibility		horizontal, vertical
Conductor Cross Sections	(mm ²)	16 - 95
Conductor type		round stranded flexible, round stranded, sector shaped stranded
Bolted connection	(mm)	M12
Max. apparent power at 0,4 kV	(kVA)	160
Maximum current	(A)	250
Earthing possibility		yes
min. distance between termination	(mm)	61

Dimensions

Width	(mm)	44
Height	(mm)	26
Depth	(mm)	54