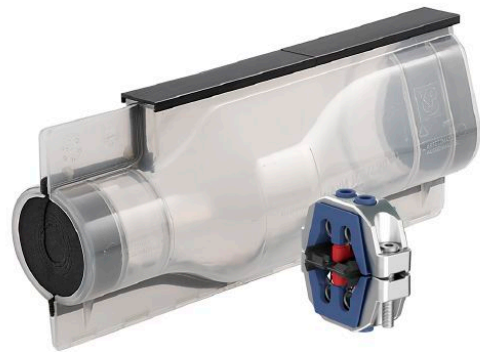


1 kV cast resin joint set 140/420N for 4 wire cables including compact tap connector 330 935 006



Picture may vary.

Technical Data

Article no.		332 407 034
Main cable diameter max.	(mm)	60
Number of wires main cable		4
Conductor cross section Al solid sector-shaped	(mm ²)	185 - 240
Conductor cross section Al stranded sector-shaped	(mm ²)	185 - 240
Conductor cross section Cu stranded sector-shaped	(mm ²)	185 - 240
Branch cable diameter	(mm)	45
Cross section of tap conductor	(mm ²)	6 - 70 + 95SE
Suitable for cable types		N(A)2XY, N(A)2X2Y, N(A)YY, N(A)Y2Y
Compact tap connector		330935006
Centric core hole diameter compact tap connector	(mm)	12,5
Joint model		140/420N
Shell material		Polycarbonate
Cast resin type		KP-PUR 2000
Cast resin container		Tins
Cast resin volume	(l)	3,9

Dimensions

Joint body diameter	(mm)	140
External length	(mm)	420
Internal length	(mm)	350