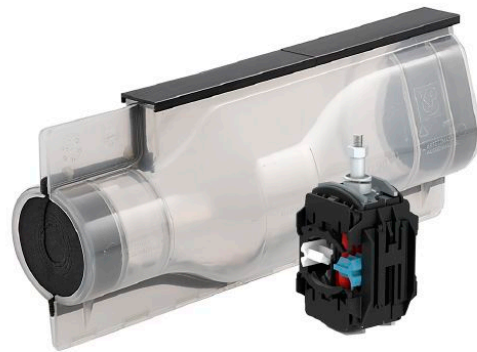


1 kV cast resin joint set 140/420N for 3½ wire cable including ISICOMPACT tap connector 331 896 021

*At 150 mm² round stranded main cables only 6 - 25 mm² solid sector-shaped / stranded sector-shaped, 6 - 35 mm² round stranded and 6 - 50 mm² round solid tap cables are possible.



Picture may vary.

Technical Data

Article no.		332 407 127
Main cable diameter max.	(mm)	60
Number of wires main cable		3 1/2
Conductor cross section Al stranded circular	(mm ²)	70/35 - 150/70 (95)*
Conductor cross section Cu stranded circular	(mm ²)	70/35 - 150/70 (95)*
Conductor cross section Al stranded sector-shaped	(mm ²)	70/35 - 150/70 (95)
Conductor cross section Cu stranded sector-shaped	(mm ²)	70/35 - 150/70 (95)
Branch cable diameter	(mm)	45
Cross section of tap conductor	(mm ²)	6 - 50 + 70SE*
Suitable for cable types		NA2XY, N(A)YY
Compact tap connector		331896021
Joint model		140/420N
Shell material		Polycarbonate
Cast resin type		KP-PUR 2000
Cast resin container		Mixing bags
Cast resin volume	(l)	3,9

Dimensions

Joint body diameter	(mm)	140
External length	(mm)	420
Internal length	(mm)	350