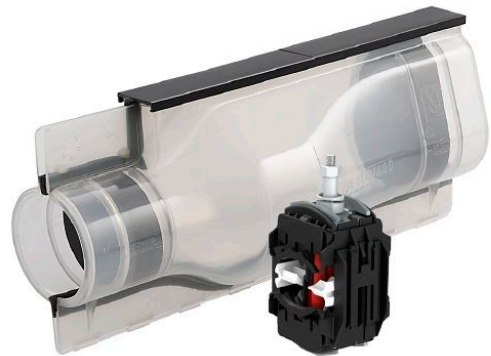


# 1 kV cast resin joint set 140/420K for 4 wire cable including ISICOMPACT tap connector 331 896 003

\*At 150 mm<sup>2</sup> round stranded main cables only 6 - 25 mm<sup>2</sup> solid sector-shaped / stranded sector-shaped, 6 - 35 mm<sup>2</sup> round stranded and 6 - 50 mm<sup>2</sup> round solid tap cables are possible.



Picture may vary.

## Technical Data

<b>Article no.</b>		<b>332 407 133</b>
<b>Main cable diameter max.</b>	(mm)	60
<b>Number of wires main cable</b>		4
<b>Conductor cross section Al solid circular</b>	(mm <sup>2</sup> )	70 - 150
<b>Conductor cross section Cu solid circular</b>	(mm <sup>2</sup> )	70 - 150
<b>Conductor cross section Al stranded circular</b>	(mm <sup>2</sup> )	70 - 150*
<b>Conductor cross section Cu stranded circular</b>	(mm <sup>2</sup> )	70 - 150*
<b>Conductor cross section Al solid sector-shaped</b>	(mm <sup>2</sup> )	70 - 185
<b>Conductor cross section Al stranded sector-shaped</b>	(mm <sup>2</sup> )	70 - 150
<b>Conductor cross section Cu stranded sector-shaped</b>	(mm <sup>2</sup> )	50 - 150
<b>Branch cable diameter</b>	(mm)	45
<b>Cross section of tap conductor</b>	(mm <sup>2</sup> )	6 - 50 + 70SE*
<b>Suitable for cable types</b>		N(A)2XY, N(A)2X2Y, N(A)YY, N(A)Y2Y
<b>Compact tap connector</b>		331896003
<b>Joint model</b>		140/420K
<b>Shell material</b>		Polycarbonate
<b>Cast resin type</b>		KP-PUR 2000

<b>Article no.</b>	<b>332 407 133</b>
<b>Cast resin container</b>	<b>Mixing bags</b>
<b>Cast resin volume</b>	(l) 3,25

## Dimensions

<b>Joint body diameter</b>	(mm) 140
<b>External length</b>	(mm) 420
<b>Internal length</b>	(mm) 270