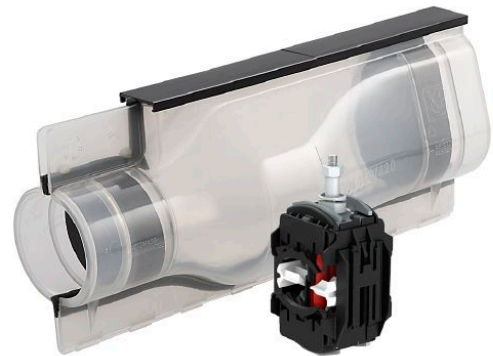


1 kV cast resin joint set 140/420K for 4 wire cable including ISICOMPACT tap connector 331 896 003

*At 150 mm² round stranded main cables only 6 - 25 mm² solid sector-shaped / stranded sector-shaped, 6 - 35 mm² round stranded and 6 - 50 mm² round solid tap cables are possible.



Picture may vary.

Technical Data

| | | |
|--|--------------------|------------------------------------|
| Article no. | | 332 407 134 |
| Main cable diameter max. | (mm) | 60 |
| Number of wires main cable | | 4 |
| Conductor cross section Al solid circular | (mm ²) | 70 - 150 |
| Conductor cross section Cu solid circular | (mm ²) | 70 - 150 |
| Conductor cross section Al stranded circular | (mm ²) | 70 - 150* |
| Conductor cross section Cu stranded circular | (mm ²) | 70 - 150* |
| Conductor cross section Al solid sector-shaped | (mm ²) | 70 - 185 |
| Conductor cross section Al stranded sector-shaped | (mm ²) | 70 - 150 |
| Conductor cross section Cu stranded sector-shaped | (mm ²) | 50 - 150 |
| Branch cable diameter | (mm) | 45 |
| Cross section of tap conductor | (mm ²) | 6 - 50 + 70SE* |
| Suitable for cable types | | N(A)2XY, N(A)2X2Y, N(A)YY, N(A)Y2Y |
| Compact tap connector | | 331896003 |
| Joint model | | 140/420K |
| Shell material | | Polycarbonate |
| Cast resin type | | KP-PUR 2000 |

| | | |
|-----------------------------|------------|--------------------|
| Article no. | | 332 407 134 |
| Cast resin container | | Tins |
| Cast resin volume | (l) | 3,25 |

Dimensions

| | | |
|----------------------------|-------------|------------|
| Joint body diameter | (mm) | 140 |
| External length | (mm) | 420 |
| Internal length | (mm) | 270 |