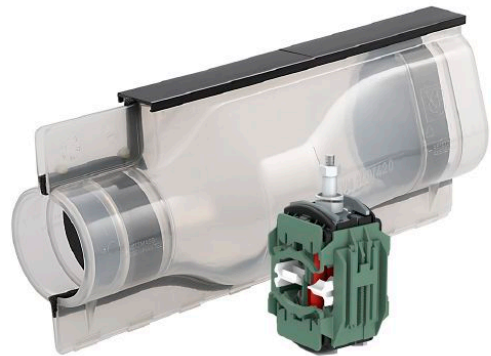


1 kV cast resin joint set 140/420K for 4 wire cable including ISICOMPACT tap connector 331 896 004



Picture may vary.

Technical Data

Article no.		332 407 135
Main cable diameter max.	(mm)	60
Number of wires main cable		4
Conductor cross section Al solid sector-shaped	(mm ²)	70 - 185
Conductor cross section Al stranded sector-shaped	(mm ²)	70 - 150
Conductor cross section Cu stranded sector-shaped	(mm ²)	70 - 150
Branch cable diameter	(mm)	45
Cross section of tap conductor	(mm ²)	6 - 50 + 70SE
Suitable for cable types		NA2XY, N(A)YY
Compact tap connector		331896004
Joint model		140/420K
Shell material		Polycarbonate
Cast resin type		KP-PUR 2000
Cast resin container		Mixing bags
Cast resin volume	(l)	3,25

Dimensions

Joint body diameter	(mm)	140
External length	(mm)	420
Internal length	(mm)	270