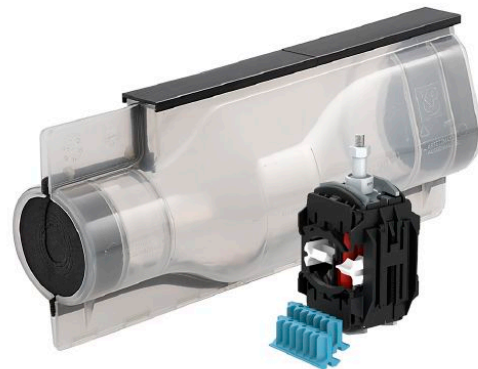


1 kV cast resin joint set 140/420N for 4 and 3½ wire cable including ISICOMPACT tap connector 331 896 031

*At 150 mm² round stranded main cables only 6 - 25 mm² solid sector-shaped / stranded sector-shaped, 6 - 35 mm² round stranded and 6 - 50 mm² round solid tap cables are possible.



Picture may vary.

Technical Data

Article no.		332 407 161
Main cable diameter max.	(mm)	60
Number of wires main cable		4, 3 1/2
Conductor cross section Al solid circular	(mm ²)	4 x 35 - 150
Conductor cross section Cu solid circular	(mm ²)	4 x 35 - 150
Conductor cross section Al stranded circular	(mm ²)	4 x 25 - 150, 3 x 70/35 - 150/70 (95)*
Conductor cross section Cu stranded circular	(mm ²)	4 x 25 - 150, 3 x 70/35 - 150/70 (95)*
Conductor cross section Al solid sector-shaped	(mm ²)	4 x 50 - 185
Conductor cross section Al stranded sector-shaped	(mm ²)	4 x 35 - 150, 3 x 70/35 - 150/70 (95)
Conductor cross section Cu stranded sector-shaped	(mm ²)	4 x 35 - 150, 3 x 70/35 - 150/70 (95)
Branch cable diameter	(mm)	45
Cross section of tap conductor	(mm ²)	6 - 50 + 70SE*
Suitable for cable types		N(A)2XY, N(A)2X2Y, N(A)YY, N(A)Y2Y
Compact tap connector		331896031
Joint model		140/420N
Shell material		Polycarbonate
Cast resin type		KP-PUR 2000

Article no.	332 407 161
Cast resin container	Mixing bags
Cast resin volume	(l) 3,9

Dimensions

Joint body diameter	(mm) 140
External length	(mm) 420
Internal length	(mm) 350