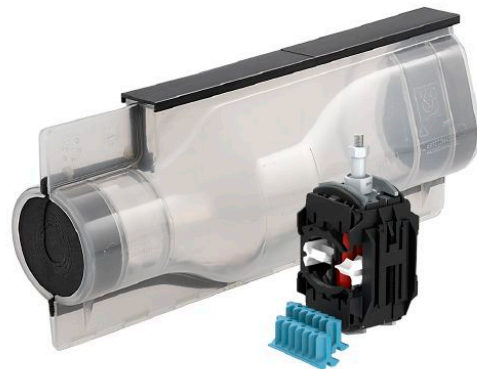


# 1 kV cast resin joint set 140/420N for 4 and 3½ wire cable including ISICOMPACT tap connector 331 896 031

\*At 150 mm<sup>2</sup> round stranded main cables only 6 - 25 mm<sup>2</sup> solid sector-shaped / stranded sector-shaped, 6 - 35 mm<sup>2</sup> round stranded and 6 - 50 mm<sup>2</sup> round solid tap cables are possible.



*Picture may vary.*

## Technical Data

<b>Article no.</b>		<b>332 407 162</b>
<b>Main cable diameter max.</b>	(mm)	60
<b>Number of wires main cable</b>		4, 3 1/2
<b>Conductor cross section Al solid circular</b>	(mm <sup>2</sup> )	4 x 35 - 150
<b>Conductor cross section Cu solid circular</b>	(mm <sup>2</sup> )	4 x 35 - 150
<b>Conductor cross section Al stranded circular</b>	(mm <sup>2</sup> )	4 x 25 - 150, 3 x 70/35 - 150/70 (95)*
<b>Conductor cross section Cu stranded circular</b>	(mm <sup>2</sup> )	4 x 25 - 150, 3 x 70/35 - 150/70 (95)*
<b>Conductor cross section Al solid sector-shaped</b>	(mm <sup>2</sup> )	4 x 50 - 185
<b>Conductor cross section Al stranded sector-shaped</b>	(mm <sup>2</sup> )	4 x 35 - 150, 3 x 70/35 - 150/70 (95)
<b>Conductor cross section Cu stranded sector-shaped</b>	(mm <sup>2</sup> )	4 x 35 - 150, 3 x 70/35 - 150/70 (95)
<b>Branch cable diameter</b>	(mm)	45
<b>Cross section of tap conductor</b>	(mm <sup>2</sup> )	6 - 50 + 70SE*
<b>Suitable for cable types</b>		N(A)2XY, N(A)2X2Y, N(A)YY, N(A)Y2Y
<b>Compact tap connector</b>		331896031
<b>Joint model</b>		140/420N
<b>Shell material</b>		Polycarbonate
<b>Cast resin type</b>		KP-PUR 2000

Article no.	332 407 162	
Cast resin container	Tins	
Cast resin volume	(l)	3,9

## Dimensions

Joint body diameter	(mm)	140
External length	(mm)	420
Internal length	(mm)	350