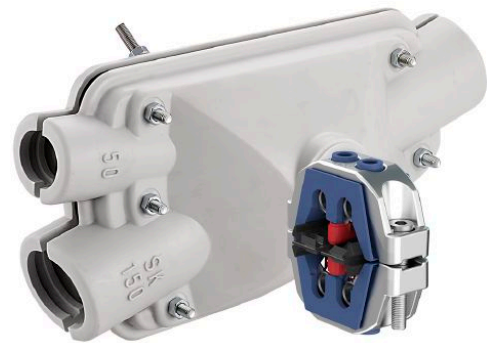


1 kV cast resin joint set 150/50 for 4 wire cables including compact tap connector 331 894 006



Picture may vary.

Technical Data

Article no.		332 409 316
Main cable diameter max.	(mm)	50
Number of wires main cable		4
Conductor cross section Al solid sector-shaped	(mm ²)	95 - 150
Conductor cross section Al stranded sector-shaped	(mm ²)	70 - 120
Conductor cross section Cu stranded sector-shaped	(mm ²)	70 - 120
Branch cable diameter	(mm)	30
Cross section of tap conductor	(mm ²)	6 - 50
Suitable for cable types		N(A)2XY, N(A)2X2Y, N(A)YY, N(A)Y2Y
Compact tap connector		331894006
Centric core hole diameter compact tap connector	(mm)	11,4
Joint model		150/50
Shell material		Polypropylene
Cast resin type		KP-FILL BRH
Cast resin container		Tins
Cast resin volume	(l)	3,3

Dimensions

Joint body diameter	(mm)	150
External length	(mm)	344
Internal length	(mm)	278