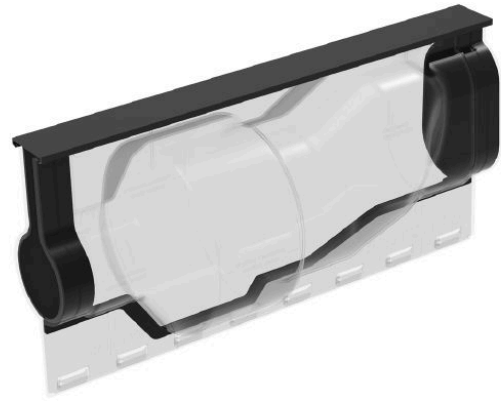


# Tap-off joint AM 165/450

Main cable: 4 x 95 - 240 mm<sup>2</sup>, max. Ø 65 mm

Tap conductor: 4 x 25 - 185 mm<sup>2</sup>, max. Ø 50 mm



*Picture may vary.*

## Technical Data

<b>Article no.</b>		<b>332 409 585</b>
<b>Cross section of main conductor</b>	(mm <sup>2</sup> )	95 - 240
<b>Cross section of tap conductor</b>	(mm <sup>2</sup> )	25 - 185
<b>Joint model</b>		165/450
<b>Shell material</b>		Polycarbonate
<b>Cast resin type</b>		KP-FILL BRH
<b>Cast resin container</b>		Tins
<b>Cast resin volume</b>	(l)	5,7

## Dimensions

<b>Joint body diameter</b>	(mm)	165
<b>External length</b>	(mm)	450
<b>Internal length</b>	(mm)	390