

# One-Core Indoor Cold-Shrink Termination, 36/42 kV, 630-800 mm<sup>2</sup>, without Bolted Cable Lug

for XLPE cable with copper wire screen.

## Material:

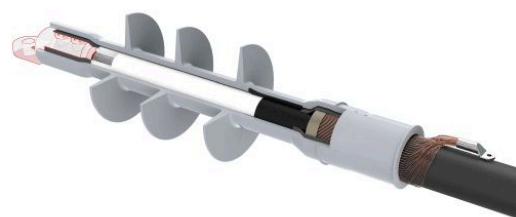
- Silicone

## Benefits:

- Reliable contact of all conductors
- Optimum contact force for all conductors
- No damage to individual conductors
- Excellent insulation
- Self-cleaning and maintenance-free
- Wide range of application
- Tested according to HD 629.1 S2

## Attention:

The cable lug is **not** included in the scope of delivery and has to be ordered separately.



*Picture may vary.*

## Technical Data

Article no.	332 731 306	
Designation	PCIT 36-42/630-800-1	
Working place	indoor	
Cable cross section at 36 kV	(mm <sup>2</sup> )	630 - 800
Cable cross section at 42 kV	(mm <sup>2</sup> )	630 - 800
Recommended cable lug	332 644 013	
Cable lug included	no	
Coldshrink body type	CTSB	
Min. diameter insulation / cable lug	(mm)	41.6
Max. diameter insulation / cable lug	(mm)	72
Max. width lug blade	(mm)	80
Number of sheds	3	

## Dimensions

Creepage length C, +/- 20 mm	(mm)	680
Termination length L, +/- 10 mm	(mm)	490
Body inner diameter D1, +/- 1 mm	(mm)	32
Spiral inner diameter D2, +/- 2 mm	(mm)	90
Shed diameter D3, +/- 5 mm	(mm)	100