

One-Core Indoor Cold-Shrink Termination, 36/42 kV, 25-95 mm², with SICON Bolted Cable Lug (332 604 012)

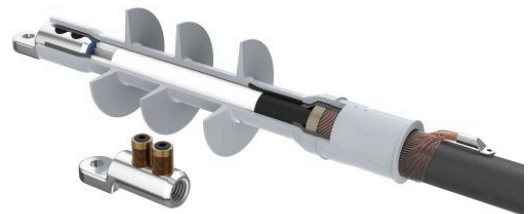
for XLPE cable with copper wire screen.

Material:

- Silicone

Benefits:

- Reliable contact of all conductors
- Optimum contact force for all conductors
- No damage to individual conductors
- Excellent insulation
- Self-cleaning and maintenance-free
- Wide range of application
- Tested according to HD 629.1 S2



Picture may vary.

Technical Data

Article no.	332 731 400
Designation	PCIT-C 36-42/25-95-1
Working place	indoor
Cable cross section at 36 kV	(mm²) 35 - 95
Cable cross section at 42 kV	(mm²) 25 - 95
Recommended cable lug	332 604 012
Cable lug included	yes
Coldshrink body type	CTSB
Min. diameter insulation / cable lug	(mm) 20.8
Max. diameter insulation / cable lug	(mm) 36
Max. width lug blade	(mm) 40
Number of sheds	3

Dimensions

Creepage length C, +/- 20 mm	(mm)	580
Termination length L, +/- 10 mm	(mm)	390
Body inner diameter D1, +/- 1 mm	(mm)	16
Spiral inner diameter D2, +/- 2 mm	(mm)	50
Shed diameter D3, +/- 5 mm	(mm)	100