

# One-Core Indoor Cold-Shrink Termination, 36/42 kV, 95-300 mm<sup>2</sup>, with SICON Bolted Cable Lug (332 605 012)

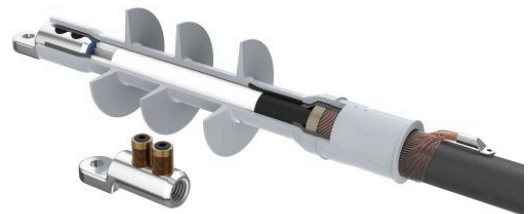
for XLPE cable with copper wire screen.

## Material:

- Silicone

## Benefits:

- Reliable contact of all conductors
- Optimum contact force for all conductors
- No damage to individual conductors
- Excellent insulation
- Self-cleaning and maintenance-free
- Wide range of application
- Tested according to HD 629.1 S2



*Picture may vary.*

## Technical Data

<b>Article no.</b>	<b>332 731 403</b>
<b>Designation</b>	<b>PCIT-C 36-42/95-300-1</b>
<b>Working place</b>	<b>indoor</b>
<b>Cable cross section at 36 kV</b>	<b>(mm<sup>2</sup>) 120 - 300</b>
<b>Cable cross section at 42 kV</b>	<b>(mm<sup>2</sup>) 95 - 300</b>
<b>Recommended cable lug</b>	<b>332 605 012</b>
<b>Cable lug included</b>	<b>yes</b>
<b>Coldshrink body type</b>	<b>CTSB</b>
<b>Min. diameter insulation / cable lug</b>	<b>(mm) 28.6</b>
<b>Max. diameter insulation / cable lug</b>	<b>(mm) 50</b>
<b>Max. width lug blade</b>	<b>(mm) 55</b>
<b>Number of sheds</b>	<b>3</b>

## Dimensions

Creepage length C, +/- 20 mm	(mm)	620
Termination length L, +/- 10 mm	(mm)	430
Body inner diameter D1, +/- 1 mm	(mm)	22
Spiral inner diameter D2, +/- 2 mm	(mm)	65
Shed diameter D3, +/- 5 mm	(mm)	100