

## One-Core Outdoor Cold-Shrink Termination, 12/24 kV, 25-95 mm<sup>2</sup>, without Bolted Cable Lug

for XLPE cable with copper wire screen.

### Material:

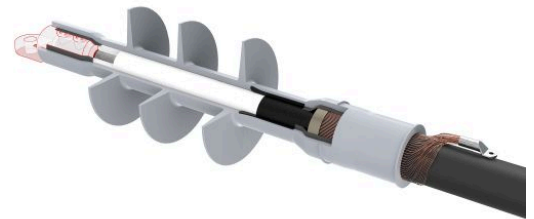
- Silicone

### Benefits:

- Reliable contact of all conductors
- Optimum contact force for all conductors
- No damage to individual conductors
- Excellent insulation
- Self-cleaning and maintenance-free
- Wide range of application
- Tested according to HD 629.1 S2

### Attention:

The cable lug is **not** included in the scope of delivery and has to be ordered separately.



*Picture may vary.*

## Technical Data

Article no.		332 732 100
Designation		PCOT 12-24/25-95-1
Working place		outdoor
Cable cross section at 12 kV	(mm <sup>2</sup> )	35 - 95
Cable cross section at 24 kV	(mm <sup>2</sup> )	25 - 95
Recommended cable lug		332 604 012
Cable lug included		no
Coldshrink body type		CTSB
Min. diameter insulation / cable lug	(mm)	13.8
Max. diameter insulation / cable lug	(mm)	27
Max. width lug blade	(mm)	30
Number of sheds		3

## Dimensions

Creepage length C, +/- 20 mm	(mm)	575
Termination length L, +/- 10 mm	(mm)	385
Body inner diameter D1, +/- 1 mm	(mm)	12
Spiral inner diameter D2, +/- 2 mm	(mm)	35
Shed diameter D3, +/- 5 mm	(mm)	100