

One-Core Outdoor Cold-Shrink Termination, 12/24 kV, 185-400 mm², without Bolted Cable Lug

for XLPE cable with copper wire screen.

Material:

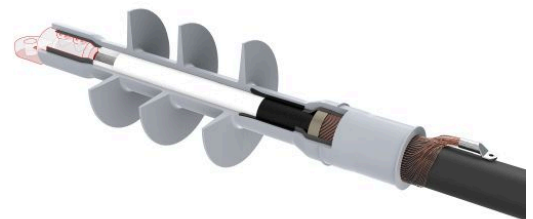
- Silicone

Benefits:

- Reliable contact of all conductors
- Optimum contact force for all conductors
- No damage to individual conductors
- Excellent insulation
- Self-cleaning and maintenance-free
- Wide range of application
- Tested according to HD 629.1 S2

Attention:

The cable lug is **not** included in the scope of delivery and has to be ordered separately.



Picture may vary.

Technical Data

Article no.	332 732 103	
Designation	PC0T 12-24/185-400-1	
Working place	outdoor	
Cable cross section at 12 kV	(mm ²)	240 - 400
Cable cross section at 24 kV	(mm ²)	185 - 400
Recommended cable lug	332 625 012	
Cable lug included	no	
Coldshrink body type	CTSB	
Min. diameter insulation / cable lug	(mm)	25.3
Max. diameter insulation / cable lug	(mm)	50
Max. width lug blade	(mm)	55
Number of sheds	3	

Dimensions

Creepage length C, +/- 20 mm	(mm)	620
Termination length L, +/- 10 mm	(mm)	430
Body inner diameter D1, +/- 1 mm	(mm)	22
Spiral inner diameter D2, +/- 2 mm	(mm)	65
Shed diameter D3, +/- 5 mm	(mm)	100