

One-Core Outdoor Cold-Shrink Termination, 12/24 kV, 400-630 mm², without Bolted Cable Lug

for XLPE cable with copper wire screen.

Material:

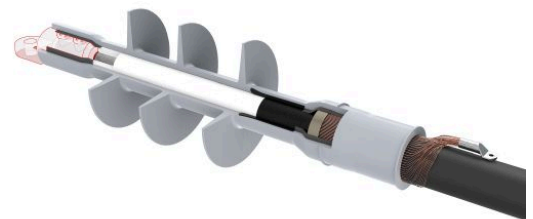
- Silicone

Benefits:

- Reliable contact of all conductors
- Optimum contact force for all conductors
- No damage to individual conductors
- Excellent insulation
- Self-cleaning and maintenance-free
- Wide range of application
- Tested according to HD 629.1 S2

Attention:

The cable lug is **not** included in the scope of delivery and has to be ordered separately.



Picture may vary.

Technical Data

Article no.	332 732 104	
Designation	PC0T 12-24/400-630-1	
Working place	outdoor	
Cable cross section at 12 kV	(mm ²)	400 - 630
Cable cross section at 24 kV	(mm ²)	400 - 630
Recommended cable lug	332 606 012	
Cable lug included	no	
Coldshrink body type	CTSB	
Min. diameter insulation / cable lug	(mm)	31.1
Max. diameter insulation / cable lug	(mm)	61
Max. width lug blade	(mm)	60
Number of sheds	3	

Dimensions

Creepage length C, +/- 20 mm	(mm)	680
Termination length L, +/- 10 mm	(mm)	490
Body inner diameter D1, +/- 1 mm	(mm)	27
Spiral inner diameter D2, +/- 2 mm	(mm)	70
Shed diameter D3, +/- 5 mm	(mm)	100