

One-Core Outdoor Cold-Shrink Termination, 12/24 kV, 25-95 mm², with SICON Bolted Cable Lug (332 604 012)

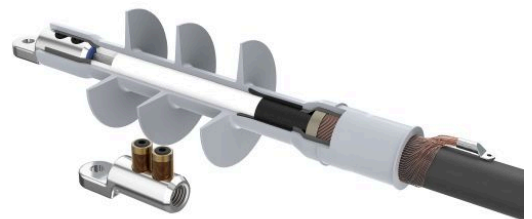
for XLPE cable with copper wire screen.

Material:

- Silicone

Benefits:

- Reliable contact of all conductors
- Optimum contact force for all conductors
- No damage to individual conductors
- Excellent insulation
- Self-cleaning and maintenance-free
- Wide range of application
- Tested according to HD 629.1 S2



Picture may vary.

Technical Data

Article no.	332 732 200
Designation	PC0T-C 12-24/25-95-1
Working place	outdoor
Cable cross section at 12 kV	(mm²) 35 - 95
Cable cross section at 24 kV	(mm²) 25 - 95
Recommended cable lug	332 604 012
Cable lug included	yes
Coldshrink body type	CTSB
Min. diameter insulation / cable lug	(mm) 13.8
Max. diameter insulation / cable lug	(mm) 27
Max. width lug blade	(mm) 30
Number of sheds	3

Dimensions

Creepage length C, +/- 20 mm	(mm)	575
Termination length L, +/- 10 mm	(mm)	385
Body inner diameter D1, +/- 1 mm	(mm)	12
Spiral inner diameter D2, +/- 2 mm	(mm)	35
Shed diameter D3, +/- 5 mm	(mm)	100