

One-Core Outdoor Cold-Shrink Termination, 36/42 kV, 95-300 mm², without Bolted Cable Lug

for XLPE cable with copper wire screen.

Material:

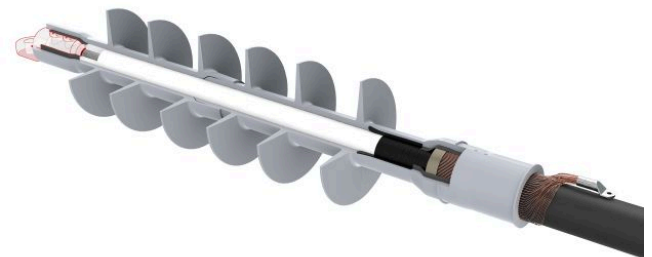
- Silicone

Benefits:

- Reliable contact of all conductors
- Optimum contact force for all conductors
- No damage to individual conductors
- Excellent insulation
- Self-cleaning and maintenance-free
- Wide range of application
- Tested according to HD 629.1 S2

Attention:

The cable lug is **not** included in the scope of delivery and has to be ordered separately.



Picture may vary.

Technical Data

Article no.	332 732 303	
Designation	PC0T 36-42/95-300-1	
Working place	outdoor	
Cable cross section at 36 kV	(mm ²)	120 - 300
Cable cross section at 42 kV	(mm ²)	95 - 300
Recommended cable lug	332 605 012	
Cable lug included	no	
Coldshrink body type	CTSB + CTSC	
Min. diameter insulation / cable lug	(mm)	28.6
Max. diameter insulation / cable lug	(mm)	50
Max. width lug blade	(mm)	55
Number of sheds	6	

Dimensions

Creepage length C, +/- 20 mm	(mm)	1060
Termination length L, +/- 10 mm	(mm)	680
Body inner diameter D1, +/- 1 mm	(mm)	22
Spiral inner diameter D2, +/- 2 mm	(mm)	65
Shed diameter D3, +/- 5 mm	(mm)	100