

One-Core Outdoor Cold-Shrink Termination, 36/42 kV, 630-800 mm², without Bolted Cable Lug

for XLPE cable with copper wire screen.

Material:

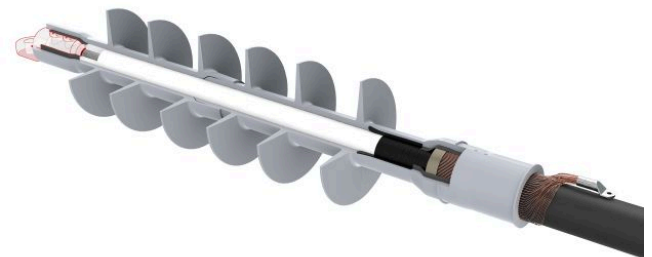
- Silicone

Benefits:

- Reliable contact of all conductors
- Optimum contact force for all conductors
- No damage to individual conductors
- Excellent insulation
- Self-cleaning and maintenance-free
- Wide range of application
- Tested according to HD 629.1 S2

Attention:

The cable lug is **not** included in the scope of delivery and has to be ordered separately.



Picture may vary.

Technical Data

Article no.	332 732 306
Designation	PC0T 36-42/630-800-1
Working place	outdoor
Cable cross section at 36 kV	(mm²) 630 - 800
Cable cross section at 42 kV	(mm²) 630 - 800
Recommended cable lug	332 644 013
Cable lug included	no
Coldshrink body type	CTSB + CTSC
Min. diameter insulation / cable lug	(mm) 41.6
Max. diameter insulation / cable lug	(mm) 72
Max. width lug blade	(mm) 80
Number of sheds	6

Dimensions

Creepage length C, +/- 20 mm	(mm)	1130
Termination length L, +/- 10 mm	(mm)	750
Body inner diameter D1, +/- 1 mm	(mm)	32
Spiral inner diameter D2, +/- 2 mm	(mm)	90
Shed diameter D3, +/- 5 mm	(mm)	100