

## One-Core Outdoor Cold-Shrink Termination, 36/42 kV, 800-1000 mm<sup>2</sup>, without Bolted Cable Lug

for XLPE cable with copper wire screen.

### Material:

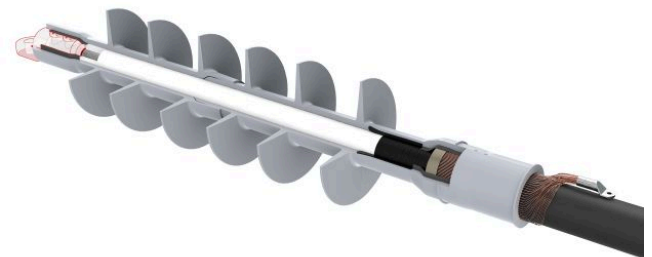
- Silicone

### Benefits:

- Reliable contact of all conductors
- Optimum contact force for all conductors
- No damage to individual conductors
- Excellent insulation
- Self-cleaning and maintenance-free
- Wide range of application
- Tested according to HD 629.1 S2

### Attention:

The cable lug is **not** included in the scope of delivery and has to be ordered separately.



*Picture may vary.*

## Technical Data

<b>Article no.</b>	<b>332 732 307</b>
<b>Designation</b>	<b>PCOT 36-42/800-1000-1</b>
<b>Working place</b>	<b>outdoor</b>
<b>Cable cross section at 36 kV</b>	<b>(mm<sup>2</sup>) 800 - 1000</b>
<b>Cable cross section at 42 kV</b>	<b>(mm<sup>2</sup>) 800 - 1000</b>
<b>Recommended cable lug</b>	<b>332 594 051</b>
<b>Cable lug included</b>	<b>no</b>
<b>Coldshrink body type</b>	<b>CTSB + CTSC</b>
<b>Min. diameter insulation / cable lug</b>	<b>(mm) 41.6</b>
<b>Max. diameter insulation / cable lug</b>	<b>(mm) 72</b>
<b>Max. width lug blade</b>	<b>(mm) 80</b>
<b>Number of sheds</b>	<b>6</b>

## Dimensions

Creepage length C, +/- 20 mm	(mm)	1130
Termination length L, +/- 10 mm	(mm)	750
Body inner diameter D1, +/- 1 mm	(mm)	32
Spiral inner diameter D2, +/- 2 mm	(mm)	90
Shed diameter D3, +/- 5 mm	(mm)	100