

# One-Core Outdoor Cold-Shrink Termination, 36/42 kV, 35-150 mm<sup>2</sup>, with SICON Bolted Cable Lug (332 599 012)

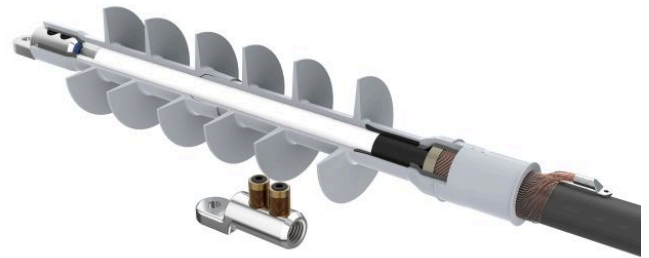
for XLPE cable with copper wire screen.

**Material:**

- Silicone

**Benefits:**

- Reliable contact of all conductors
- Optimum contact force for all conductors
- No damage to individual conductors
- Excellent insulation
- Self-cleaning and maintenance-free
- Wide range of application
- Tested according to HD 629.1 S2



*Picture may vary.*

## Technical Data

<b>Article no.</b>	<b>332 732 401</b>
<b>Designation</b>	<b>PC0T-C 36-42/35-150-1</b>
<b>Working place</b>	<b>outdoor</b>
<b>Cable cross section at 36 kV</b>	<b>(mm<sup>2</sup>) 35 - 150</b>
<b>Cable cross section at 42 kV</b>	<b>(mm<sup>2</sup>) 50 - 150</b>
<b>Recommended cable lug</b>	<b>332 599 012</b>
<b>Cable lug included</b>	<b>yes</b>
<b>Coldshrink body type</b>	<b>CTSB + CTSC</b>
<b>Min. diameter insulation / cable lug</b>	<b>(mm) 20.8</b>
<b>Max. diameter insulation / cable lug</b>	<b>(mm) 36</b>
<b>Max. width lug blade</b>	<b>(mm) 40</b>
<b>Number of sheds</b>	<b>6</b>

## Dimensions

Creepage length C, +/- 20 mm	(mm)	1020
Termination length L, +/- 10 mm	(mm)	640
Body inner diameter D1, +/- 1 mm	(mm)	16
Spiral inner diameter D2, +/- 2 mm	(mm)	50
Shed diameter D3, +/- 5 mm	(mm)	100