

# Low Voltage Screw Connector, tin-plated, with oil stop

The low voltage connectors meet the requirements of the DIN SPEC 47640 standard and are suitable for all conductor materials and conductor types of conductor classes 1 and 2.

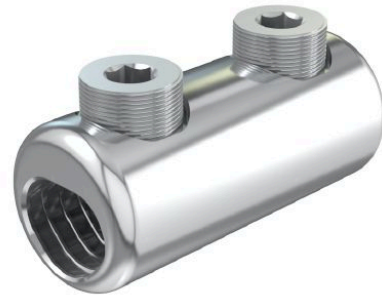
No rework is necessary for heat shrinking over the connectors.

Due to the new large heart-shaped conductor channel the bolts end flush with the straight upper edge of the conductor channel.

This makes it easier to insert crushed or protruding conductor ends, and prevents the individual wires from catching or snagging.

The rotatable friction disc at the bottom of the bolts prevents damage to strands during installation, and ensures optimum contact forces over the entire service life of the connection regardless of the conductor material and shape.

The low voltage connectors are mechanically and electrically tested to IEC 61238-1-1 class A.



Picture may vary.

**Advantages:**

- For all conductor materials and designs, inclusive 120° sector
- Generously dimensioned conductor channel
- High contact force with low tightening torque
- Generous space behind the bolt for secure conductor positioning
- No damage to individual wires
- Assembly with standard tools

## Technical Data

<b>Article no.</b>	<b>332 804 220 00001</b>	
<b>Conductor cross section Al RE</b>	(mm) <sup>2</sup>	<b>25 - 95</b>
<b>Conductor cross section Al RM</b>	(mm) <sup>2</sup>	<b>25 - 95</b>
<b>Conductor cross section Al SE</b>	(mm) <sup>2</sup>	<b>25 - 95</b>
<b>Conductor cross section Al SM</b>	(mm) <sup>2</sup>	<b>25 - 95</b>
<b>Conductor cross section Cu RE</b>	(mm) <sup>2</sup>	<b>25 - 95</b>
<b>Conductor cross section Cu RM</b>	(mm) <sup>2</sup>	<b>25 - 95</b>
<b>Conductor cross section Cu SM</b>	(mm) <sup>2</sup>	<b>25 - 95</b>
<b>Material connector body</b>	<b>aluminium, tin-plated</b>	
<b>Inspection hole</b>	<b>no</b>	
<b>Oil stop</b>	<b>yes</b>	

<b>Article no.</b>	<b>332 804 220 00001</b>
<b>Material screws</b>	<b>aluminium, uncoated</b>
<b>Number of screws</b>	<b>2</b>
<b>Width across flats</b>	<b>6 (inner hexagon)</b>
<b>Screw Type</b>	<b>grub screw</b>

## Dimensions

<b>Outer diameter</b>	<b>Ø (mm)</b>	<b>24</b>
<b>Body Length</b>	<b>(mm)</b>	<b>55</b>