

Low Voltage Screw Connector, tin-plated, with inspection hole

The low voltage connectors meet the requirements of the DIN SPEC 47640 standard and are suitable for all conductor materials and conductor types of conductor classes 1 and 2.

No rework is necessary for heat shrinking over the connectors.

Due to the new large heart-shaped conductor channel the bolts end flush with the straight upper edge of the conductor channel.

This makes it easier to insert crushed or protruding conductor ends, and prevents the individual wires from catching or snagging.

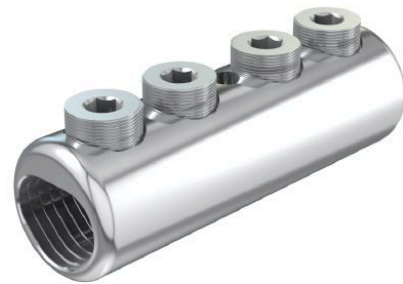
The rotatable friction disc at the bottom of the bolts prevents damage to strands during installation, and ensures optimum contact forces over the entire service life of the connection regardless of the conductor material and shape.

The low voltage connectors are mechanically and electrically tested to IEC 61238-1-1 class A.

Advantages:

- For all conductor materials and designs, inclusive 120° sector
- Generously dimensioned conductor channel
- High contact force with low tightening torque
- Generous space behind the bolt for secure conductor positioning
- No damage to individual wires
- Assembly with standard tools

Picture may vary.



Technical Data

Article no.	332 807 120 00001	
Conductor cross section Al RE	(mm) ²	95 - 240
Conductor cross section Al RM	(mm) ²	95 - 240
Conductor cross section Al SE	(mm) ²	95 - 300
Conductor cross section Al SM	(mm) ²	95 - 240
Conductor cross section Cu RE	(mm) ²	95 - 240
Conductor cross section Cu RM	(mm) ²	95 - 240
Conductor cross section Cu SM	(mm) ²	95 - 240
Material connector body	aluminium, tin-plated	
Inspection hole	yes	
Oil stop	no	

Article no.	332 807 120 00001
Material screws	aluminium, uncoated
Number of screws	4
Width across flats	8 (inner hexagon)
Screw Type	grub screw

Dimensions

Outer diameter	Ø (mm)	35
Body Length	(mm)	110