

# LV-HRC Network Switch Fuse NH 1 - 2, 1-phase, for Insulated Overhead Lines (ABC)

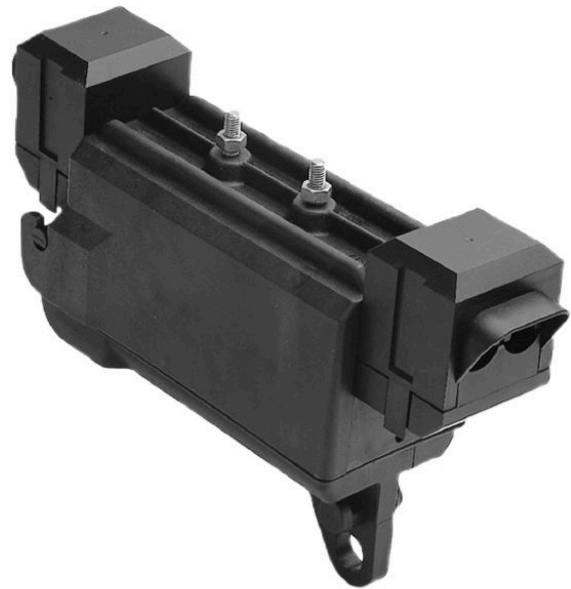
With fully-insulated terminal clamp on both sides for Al/Cu conductors.

**Application:**

For insulated bunched cable systems or bare overhead lines. To be installed on cross arms, with bracket on a mast, on roofs or with special strain plate as a strain isolator. To be protected by single phase consumer terminals or as an isolator with a solid link.

**Material:**

- Weatherproof housing: black, made of robust UV, age-resistant high-quality fibre glass-reinforced polyamide.
- Contacts: tin-plated copper
- Terminals: Al alloy
- Steel parts: hot-galvanized



*Picture may vary.*

## Technical Data

<b>Article no.</b>		<b>350 258 001</b>
<b>Conductor cross section incoming</b>	(mm <sup>2</sup> )	50 -240
<b>Conductor cross section outgoing</b>	(mm <sup>2</sup> )	50 -240
<b>Rated current with NH-fuses max.</b>	(A)	400
<b>Rated current with switch blades max.</b>	(A)	400
<b>Nominal operating voltage max.</b>	(V)	500
<b>Utilisation category</b>		AC 21 B
<b>Protection Type</b>		IP 23