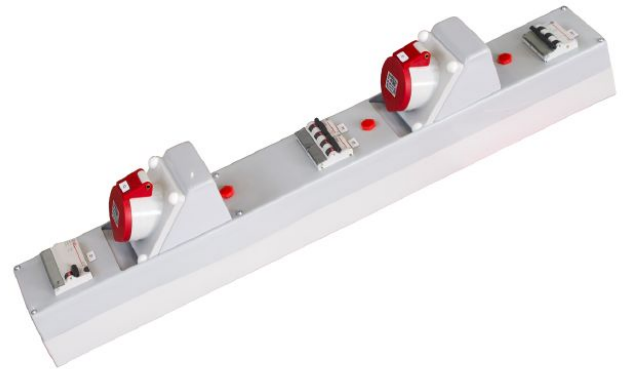


# Strip with 2 CEE sockets 16A, 5-pin, series fuse LS switch C 63A, 3-pin



Picture may vary.

## Technical Data

<b>Article no.</b>	<b>545 812 073</b>
<b>for busbar centre</b>	<b>185</b>
<b>Power points</b>	<b>2 CEE power points 16 A, 5-pole</b>
<b>Fuse</b>	<b>LS-Schalter C 63A, 3-polig</b>
<b>Fault protection switch</b>	<b>Fault protection switch 40A / 0.03A, type A</b>
<b>Outgoing feeder fuses</b>	<b>2 Automatic cut out C16A 3 pole</b>
<b>Certified meter</b>	<b>-</b>