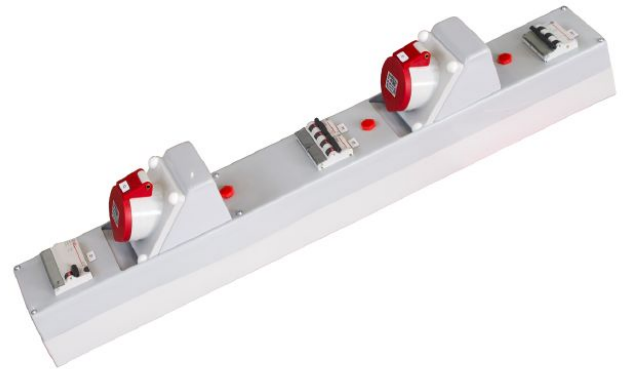


Strip with 1 16A and 1 32A CEE socket, 5-pin, series fuse LS switch C 63A, 3-pin



Picture may vary.

Technical Data

Article no.	545 812 077
for busbar centre	185
Power points	for each 1 CEE extension lead 16 A and 32 A, 5-pole
Fuse	LS-Schalter C 63A, 3-polig
Fault protection switch	Fault protection switch 40A / 0.03A, type A
Outgoing feeder fuses	for each 1 automatic cut out B16+32A 3 pole
Certified meter	-