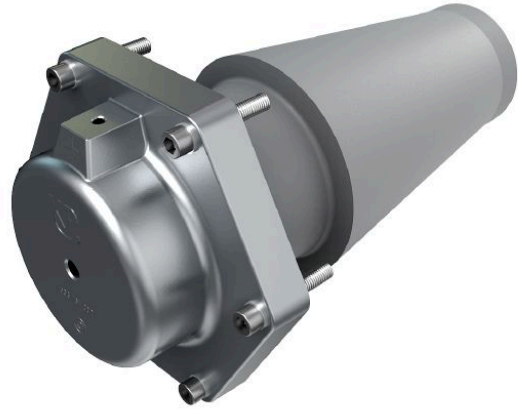


# CONNEX Dummy Plug, Size 6-S

For sealing and voltage-proof closing of CONNEX sockets size 6-S.

Suitable and approved for continuous operation and voltage tests.



*Picture may vary.*

## Technical Data

<b>Article no.</b>	<b>827 706 014</b>	
<b>Size</b>	<b>6-S</b>	
<b>Applicable standards</b>	<b>IEC 60137, IEC 62067</b>	
<b>Working place</b>	<b>indoor, outdoor and offshore</b>	
<b>Environment temperature</b>	<b>(°C)</b>	<b>-25°C up to 50°C</b>
<b>Highest voltage</b>	<b>U<sub>m</sub> (kV)</b>	<b>245</b>
<b>Nominal voltage</b>	<b>U<sub>n</sub> (kV)</b>	<b>220 - 230</b>
<b>Rated design voltage to ground</b>	<b>U<sub>0</sub> (kV)</b>	<b>127 - 133</b>
<b>AC withstand voltage</b>	<b>1 min (kV)</b>	<b>505</b>
<b>Lightning impulse withstand voltage</b>	<b>(kV)</b>	<b>1050</b>
<b>Partial discharge test &lt; 5pc at</b>	<b>(kV)</b>	<b>190</b>
<b>AC withstand voltage</b>	<b>10 min (kV)</b>	<b>505</b>
<b>Partial discharge test &lt; 2pC at</b>	<b>(kV)</b>	<b>460</b>

## Dimensions

<b>Length outside socket</b>	<b>(mm)</b>	<b>90</b>
<b>Pitch circle diameter</b>	<b>(mm)</b>	<b>245</b>
<b>Connection thread</b>	<b>1 x M10</b>	