

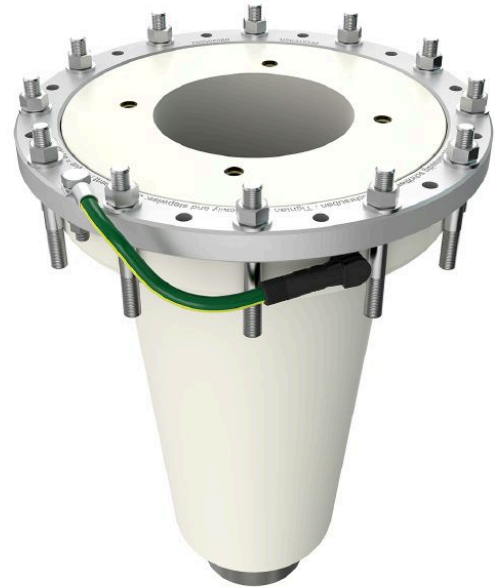
CONNEX Socket, Size 5-S, for GIS, up to 145 kV

Application:

- Socket for mounting into gas-insulated switchgears (GIS), gas-insulated transformers, joints and other gas-insulated equipment

Characteristics:

- Compact design of socket allows very small cable boxes and reduction of insulation gas
- Testing of switchgear in factory due to short time amount for plugging the accessories
- Assembly time is significantly reduced and safe assembling guaranteed
- Touch-proof, maintenance-free and floodable (IP67)



Picture may vary.

Technical Data

Article no.	828 050 999 00002	
Size	5-S	
Max. system voltage	U_m (kV)	145
Nominal voltage	U_n (kV)	132 - 138
Conductor residual voltage	U₀ (kV)	76
Applicable standards	Compact design	
Fitting length	(mm)	410
Pitch circle diameter	(mm)	320
Diameter of flange opening	(mm)	255
Capacitive voltage tap	with	
Working place	outdoor, indoor and offshore	
Insulation medium	gas	
Routine test: AC withstand voltage 1 min.	(kV)	275
Routine test: Partial discharge test < 2 pC at	(kV)	190
Rated lightning impulse withstand voltage BIL	(kV)	650
Nominal current	I_N (A)	2500
Max. dynamic short circuit current	(kA)	160