

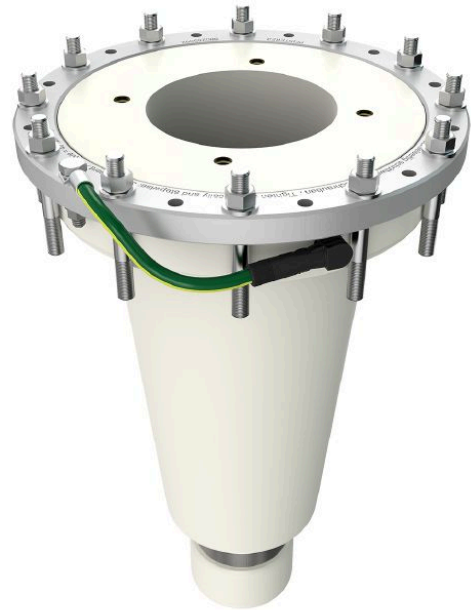
CONNEX Socket, Size 5-S, for GIS, up to 145 kV

Application:

- Socket for mounting into gas-insulated switchgears (GIS), gas-insulated transformers, joints and other gas-insulated equipment

Characteristics:

- Testing of switchgear in factory due to short time amount for plugging the accessories
- Assembly time is significantly reduced and safe assembling guaranteed
- Touch-proof, maintenance-free and floodable (IP67)



Picture may vary.

Technical Data

| | | |
|--|-------------------------------------|------------------|
| Article no. | 828 050 999 00004 | |
| Size | 5-S | |
| Max. system voltage | U_m (kV) | 145 |
| Nominal voltage | U_n (kV) | 132 - 138 |
| Conductor residual voltage | U₀ (kV) | 76 |
| Applicable standards | IEC 62271-209 (Fig.5) | |
| Fitting length | (mm) | 470 |
| Pitch circle diameter | (mm) | 320 |
| Diameter of flange opening | (mm) | 255 |
| Capacitive voltage tap | with | |
| Working place | outdoor, indoor and offshore | |
| Insulation medium | gas | |
| Routine test: AC withstand voltage 1 min. | (kV) | 275 |
| Routine test: Partial discharge test < 2 pC at | (kV) | 190 |
| Rated lightning impulse withstand voltage BIL | (kV) | 650 |
| Nominal current | I_N (A) | 2500 |
| Max. dynamic short circuit current | (kA) | 160 |